

ADSD**ADMIRALTY**
Digital Sailing DirectionsUK Hydrographic
Office

Essential information to support port entry and coastal navigation in a new, easy-to-use digital format

ADMIRALTY Digital Sailing Directions (ADSD) offers quick and easy access to the information mariners need to create effective passage plans for safe, efficient and compliant voyages.

This new generation of Sailing Directions has been developed to provide the same trusted planning information in a new and improved digital format.

Familiar look and feel

ADSD has a familiar look and feel to traditional Sailing Directions, enhanced by a more accessible and user-friendly interface.



Clearly visualise key features

The new geo-display makes it easy for navigators to visualise the position of features relevant to their route, providing enhanced spatial awareness of critical navigational information and helping to reduce the workload of navigating officers.

– Geo-referenced features

All features in ADSD are geo-referenced and clearly displayed alongside routing information for ease of use.

– Visual display of routes

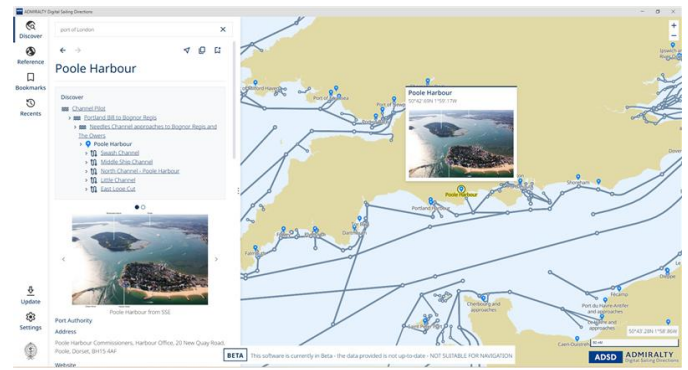
By displaying a range of indicative routes, ADSD helps mariners to easily find essential routing information – simplifying the passage planning process.

– Easy-to-find information

The intuitive user interface removes clutter and clearly displays all key navigational information for a wide range of ports and routes. The simple search function also makes it easier than ever to find the exact information you need.

– Improved imagery

ADSD includes high-quality images of coastal views and navigational features including landmarks, beacons, port views and more. These real-world visual aids enhance situational awareness and support the critical planning stage for port entry and coastal navigation.



Designed for navigators

ADSD has been developed with the mariner in mind. By working closely with navigating officers around the world, we have developed a product that aims to reduce the time spent planning a passage while improving route safety and efficiency.

User research conducted by the UKHO will continue to guide future development and design work.

Access the same trusted information

ADSD offers the same high-quality information produced by the UKHO as found in traditional Sailing Directions – but in a more accessible and user-friendly format. Therefore mariners can be confident they are using the same trusted data that they have valued and relied upon for decades.




UK Hydrographic
Office

Admiralty Way, Taunton, Somerset
TA1 2DN, United Kingdom
Telephone +44 (0)1823 484444
customerservices@ukho.gov.uk
gov.uk/ukho

Discover more about our market-leading
ADMIRALTY products and services:

admiralty.co.uk



ADMIRALTY and  are trademarks of the Secretary of State for Defence

25.08.V02.EN © Crown Copyright 2025. All rights reserved. Correct at the time of publishing.