



# ADMIRALTY Digital Catalogue User guide

---

## Contents

<b>1. <a href="#">Introduction</a></b>	<b>3</b>
Conventions Used in this Document	3
<b>2. <a href="#">Service Overview</a></b>	<b>4</b>
<b>3. <a href="#">Getting Started</a></b>	<b>5</b>
System Requirements	5
Installation of ADMIRALTY Digital Catalogue	5
Connection to Server for Online Updates	5
<b>4. <a href="#">Service Details</a></b>	<b>6</b>
What is ADMIRALTY Digital Catalogue?	6
Updating Catalogues	6
The User Interface	7
The Menu Bar	7
The Navigation Bar	19
The Navigational Globe	25
Overlay Settings	26
Filter	27
The Chart Display	28
The T&P NMs	31
Other Products	32
The Tab Bar	33
The Context Menus	33
<b>5. <a href="#">Table of Figures</a></b>	<b>35</b>
<b>6. <a href="#">Glossary</a></b>	<b>37</b>
<b>7. <a href="#">Trouble Shooting</a></b>	<b>38</b>

# 1. Introduction

---

## Conventions Used in this Document

*Italic* font is used for:

- program and component names

**Boldface** is used for:

- chapter and section headlines
- important notes
- cross references

Courier New font is used for:

- any text typed by the user
- file content and names

### **Note:**

- Displays important information which should not be ignored.

Please note:

- Screen layouts illustrated in this user guide may differ from the actual one.
- The information described in this user guide is subject to change without notice.
- Not all the functions described in this user guide may be supported by all Equipment Manufacturers' systems.
- Windows is a registered trademark of Microsoft Corporation in the United States and/or other countries.

## 2. Service Overview

---

The *ADMIRALTY Digital Catalogue* combines the Paper Charts, ARCS, AVCS, ADMIRALTY Publications and Digital Publications catalogues. The catalogue also has the facility to display current Temporary and Preliminary Notices to Mariners.

Navigators can view the limits of all the products and overlay a ship's route to compute the chart coverage needed for a safe passage. A typical scenario may be to select all available ENC's within the AVCS with gaps being filled in by ARCS or paper charts. An inventory function can be used to filter charts and ENC's that are already on board. The resulting list of required charts and ENC's left in the basket can be saved and emailed to a distributor of your choice as an enquiry for an order. Other products such as List of Lights or TotalTide can be selected simultaneously.

The catalogues can be easily updated online with the latest data to ensure the charts and products available are always current.

## 3. Getting Started

---

### System Requirements

To ensure trouble-free functioning the following minimum requirements must be met:

- Windows XP (Service Pack 3 recommended), Windows 7 (32/64 bit), Windows 8
- Screen resolution 1024 by 768 pixels
- Processor 2 GHz
- 512 MB of RAM
- 100 MB free disk space for the installation
- Fast Internet access for future catalogue downloads

### Installation of ADMIRALTY Digital Catalogue

*ADMIRALTY Digital Catalogue* can be downloaded from the ADMIRALTY website

<https://www.admiralty.co.uk/publications/admiralty-digital-catalogue>

- Extract zip files named ADC\_Full.zip
- Start Setup.exe
- Follow the instructions displayed on the screen.

This will install *ADMIRALTY Digital Catalogue* on your computer.

***Note:*** Any previously installed version of *ADMIRALTY Digital Catalogue* must be closed prior to the installation of the new version.

### Connection to Server for Online Updates

*ADMIRALTY Digital Catalogue* reads the proxy information if available and then builds up the connection for downloading the catalogues to be updated.

The proxy settings to connect to the server are defined in Settings → Control Panel → Internet Options → tab Connections → LAN Settings → section Proxy Server.

## 4. Service Details

### What is ADMIRALTY Digital Catalogue?

*ADMIRALTY Digital Catalogue* is a service program of The United Kingdom Hydrographic Office (UKHO) allowing you to manually select and combine vector charts, raster charts (ARCS) and paper charts (SNCs) into a single package. Additionally, other ADMIRALTY products such as TotalTide and Digital List of Lights can be included.

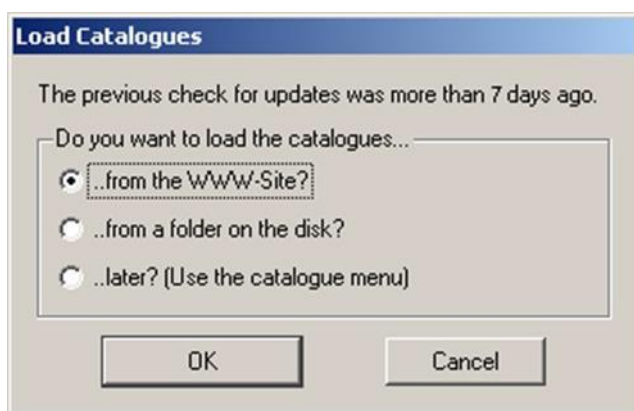
Based on this selection distributors can create quotes, and customer orders can be placed. The products to be ordered are saved in a *Shopping Basket* and this file can then be transmitted by the customer to a distributor, selectable from a list.

*ADMIRALTY Digital Catalogue* allows the customer to view, supplement, replace, renew, and optimise an inventory of charts at any time. This is supported by various search options, e.g. manual route selection, search for specific port names, creation of lists, etc.

### Updating Catalogues

The chart catalogue files are regularly updated to ensure they are always current.

If the chart catalogues have not been updated or checked for updates for more than 7 days an out-of-date warning message will be displayed when *ADMIRALTY Digital Catalogue* is started (see **Figure 1 unterhalb**). The catalogue can be updated online by selecting *..from the WWW-Site?* or *..from a folder on the disk?*. However, you can ignore this message by choosing *..later? (Use the catalogue menu)* or clicking the *Cancel* button.



**Figure 1 - Window Catalogue Warning**

After clicking on *OK* the *Available Catalogue Updates* window will open, and display information about the catalogues which need to be renewed (see **Catalogue unterhalb**).

## The User Interface

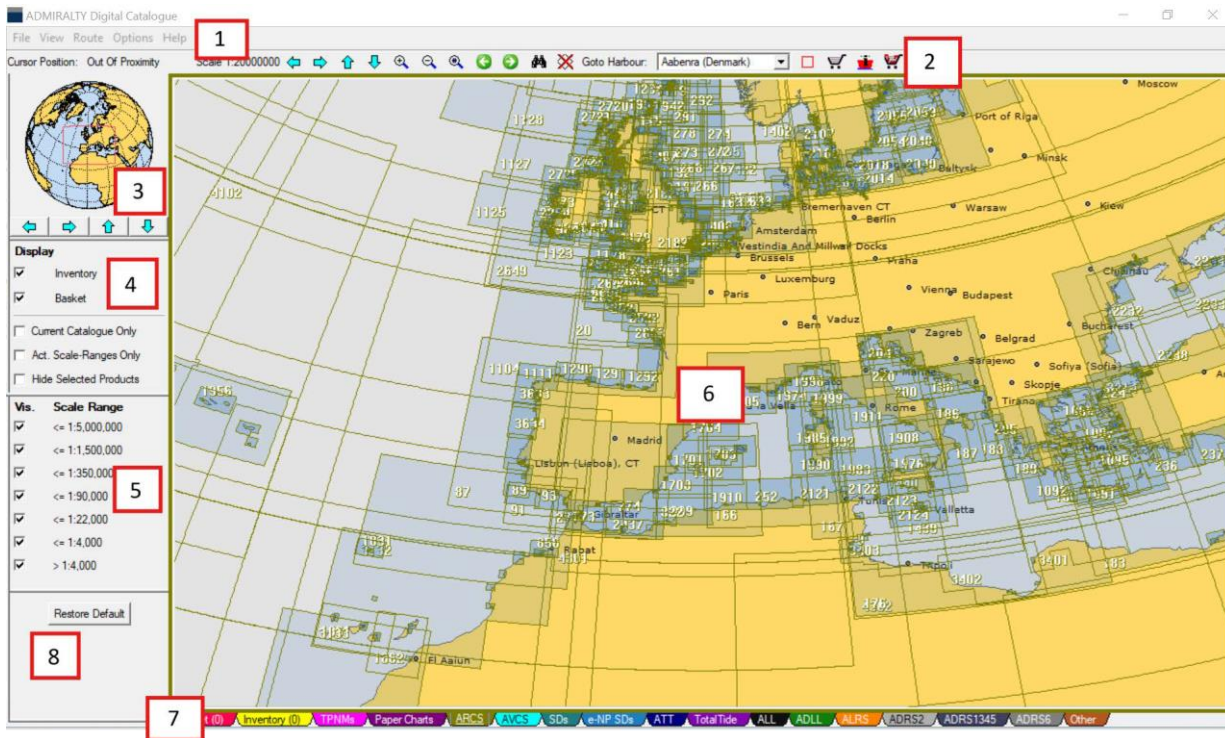


Figure 2 - ADMIRALTY Digital Catalogue User Interface

The *ADMIRALTY Digital Catalogue User Interface* is divided into the following components:

1. The Menu Bar
2. The Navigation Bar
3. The Navigational Globe
4. Overlay Settings
5. Filter
6. The Chart Display
7. The Tab Bar
8. The Context Menus (via right mouse button)

## The Menu Bar

The *Menu Bar* includes the following items:



Figure 3 - The Menu Bar

## Menu Item File

The menu item *File* includes the following functions:

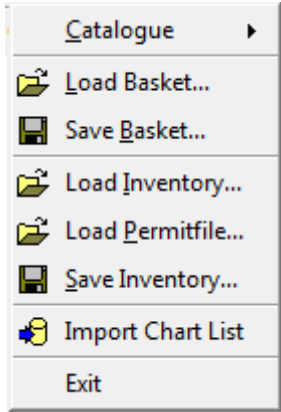


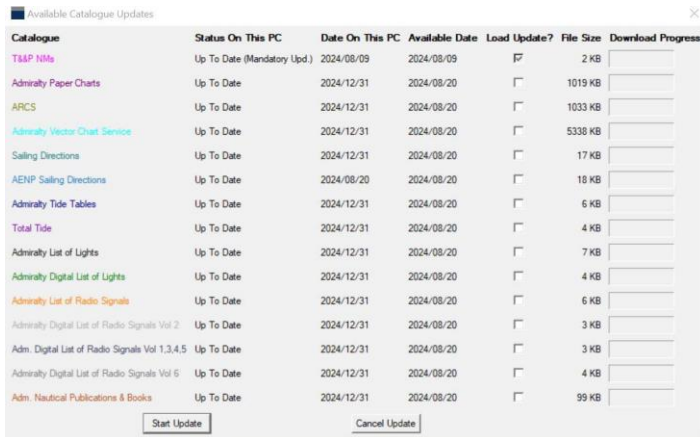
Figure 4 - Menu item File

## Catalogue

The function *Catalogue* includes the following entries:

- Online Update of Catalogue...
- Load Catalogue from Disk...
- Status Of Catalogue...

## Online Update of Catalogue



Catalogue	Status On This PC	Date On This PC	Available Date	Load Update?	File Size	Download Progress
TMAP NMs	Up To Date (Mandatory Upd.)	2024/08/09	2024/08/09	<input checked="" type="checkbox"/>	2 KB	<div style="width: 100%;"></div>
Admiralty Paper Charts	Up To Date	2024/12/31	2024/08/20	<input type="checkbox"/>	1019 KB	<div style="width: 0%;"></div>
ARCS	Up To Date	2024/12/31	2024/08/20	<input type="checkbox"/>	1033 KB	<div style="width: 0%;"></div>
Admiralty Vector Chart Service	Up To Date	2024/12/31	2024/08/20	<input type="checkbox"/>	5338 KB	<div style="width: 0%;"></div>
Sailing Directions	Up To Date	2024/12/31	2024/08/20	<input type="checkbox"/>	17 KB	<div style="width: 0%;"></div>
AENP Sailing Directions	Up To Date	2024/08/20	2024/08/20	<input type="checkbox"/>	18 KB	<div style="width: 0%;"></div>
Admiralty Tide Tables	Up To Date	2024/12/31	2024/08/20	<input type="checkbox"/>	6 KB	<div style="width: 0%;"></div>
Total Tide	Up To Date	2024/12/31	2024/08/20	<input type="checkbox"/>	4 KB	<div style="width: 0%;"></div>
Admiralty List of Lights	Up To Date	2024/12/31	2024/08/20	<input type="checkbox"/>	7 KB	<div style="width: 0%;"></div>
Admiralty Digital List of Lights	Up To Date	2024/12/31	2024/08/20	<input type="checkbox"/>	4 KB	<div style="width: 0%;"></div>
Admiralty List of Radio Signals	Up To Date	2024/12/31	2024/08/20	<input type="checkbox"/>	6 KB	<div style="width: 0%;"></div>
Admiralty Digital List of Radio Signals Vol 2	Up To Date	2024/12/31	2024/08/20	<input type="checkbox"/>	3 KB	<div style="width: 0%;"></div>
Adm. Digital List of Radio Signals Vol 1,3,4,5	Up To Date	2024/12/31	2024/08/20	<input type="checkbox"/>	3 KB	<div style="width: 0%;"></div>
Admiralty Digital List of Radio Signals Vol 6	Up To Date	2024/12/31	2024/08/20	<input type="checkbox"/>	4 KB	<div style="width: 0%;"></div>
Adm. Nautical Publications & Books	Up To Date	2024/12/31	2024/08/20	<input type="checkbox"/>	99 KB	<div style="width: 0%;"></div>

Figure 5 - Available Catalogue Updates dialogue

In the *Available Catalogue Updates* window information about the chart data is displayed.

- In the left column the *Catalogues* are listed.
- *Status On This PC* displays whether the data is *Up To Date* or not.
- *Date On This PC* displays current date of data.
- *Available Date* displays the date of the available updates.
- *Load Update?* allows selecting of the catalogues to be updated.
- *File Size* gives the size of the catalogue files.
- *Download Progress* is symbolized while updating.
- Clicking on *Start Update* will load the selected data and update *ADMIRALTY Digital Catalogue*. Clicking on *Cancel Update* will cancel the update process.



## Load Catalogue from Disk

This entry opens a window in which the file `ACCatalogs.zip` can be selected. It is used if catalogue updates are supplied on disk or by email.

## Status of Catalogue

This entry displays the date of each catalogue loaded onto the PC.



Catalogue	Shortname	Date On This PC
T&P NMs	TPNMs	2024/08/09
Admiralty Paper Charts	Paper Charts	2024/12/31
ARCS	ARCS	2024/12/31
Admiralty Vector Chart Service	AVCS	2024/12/31
Sailing Directions	SDs	2024/12/31
AENP Sailing Directions	e-NP SDs	2024/08/20
Admiralty Tide Tables	ATT	2024/12/31
Total Tide	TotalTide	2024/12/31
Admiralty List of Lights	ALL	2024/12/31
Admiralty Digital List of Lights	ADLL	2024/12/31
Admiralty List of Radio Signals	ALRS	2024/12/31
Admiralty Digital List of Radio Signals Vol 2	ADRS2	2024/12/31
Adm. Digital List of Radio Signals Vol 1,3,4,5	ADRS1345	2024/12/31
Admiralty Digital List of Radio Signals Vol 6	ADRS6	2024/12/31
Adm. Nautical Publications & Books	Other	2024/12/31

Figure 6 - Catalogue Status

## Load Basket...

This function opens a file selection box which allows the user to load a previously saved basket file (.txt) or and e-Navigator basket file (.bsk) into the *Shopping Basket*. The saved basket file contents are added to any products already within the basket.

The format is as follows:

```
Product Type Product Number
ENC Units IT400106
ARCS 122
```

## Save Basket...

This function allows the user to save the content of the *Shopping Basket* into a file. It is also possible to save the basket file in a comma separated value (.csv) format so that the contents of the basket can be easily imported into Microsoft Excel.

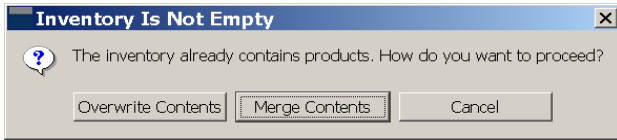
## Load Inventory...

This function opens a file selection box which allows the user to load a previously saved inventory file into the *Inventory*. The file extension is .txt.

An inventory text file from another source can also be loaded into the catalogue. It must comply with the correct catalogue format as follows:

```
Product Type Product Number
ENC Units IT400106
ARCS 122
```

If the current inventory already contains a number of products, the user is asked whether to overwrite or merge the contents.



**Figure 7 - Message window to overwrite or merge contents of Inventory**

### ***Load Permit File...***

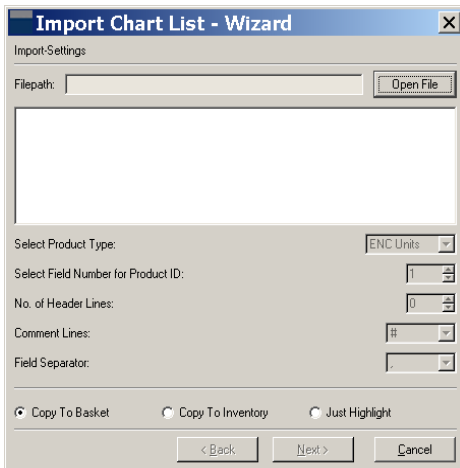
This function opens a file selection box which allows the user to use a raster or vector chart permit file to populate the inventory. The populated charts are highlighted in the catalogue. Please note invalid cells are not loaded.

### ***Save Inventory...***

This function allows the user to save the content of the *Inventory* into a file.

### ***Import Chart list...***

This function allows the user to load a list of products, for example paper charts, and have these products highlighted in the chart display, added to the shopping basket or added to the inventory.



**Figure 8 – Import Chart List**

***Open File*** – the file that contains the list of products.

***Select Product Type*** – the type of product in the file, ARCS, BA Charts, ENCs.

***Select Field Number for Product ID*** – where the file contains more information than just the product code, this defines where the product code can be located.

***No. of Header lines*** – where the file contains headings this identifies the number of header lines; this is to say the number of lines at the start of the file that will be ignored.

***Comment Lines*** – where the file contains comments enables the wizard to identify these and ignore them.

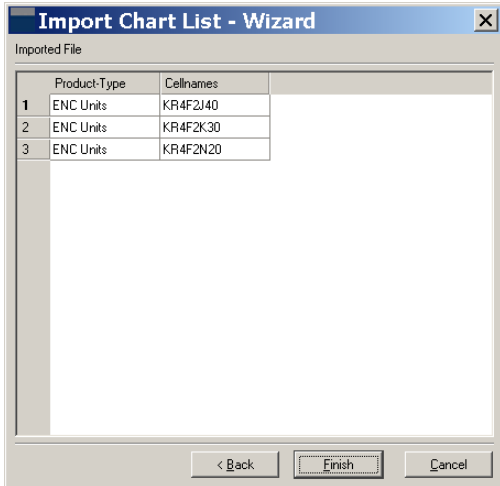
***Field Separator*** – where the file contains more information than just the product code, this identifies how the information is separated, for example by comma or tab character.

***Copy To Basket*** – will add each product in the file into the catalogue basket.

***Copy To Inventory*** – will add each product in the file into the catalogue inventory.

***Just Highlight*** – highlights all the products in the file, useful to select products on the current tab based on the limits of a different type of product, for example loading and highlighting a list of BA Charts which can be used to select ENCs.

***Next*** – will preview the file using the current settings.



**Figure 9 – Import Chart List**

This form enables the user to preview the file, to check that the correct field has been identified as the product ID.

**Back** – will take the user to the previous screen so that the import parameters can be modified.

**Finish** – will process the file.

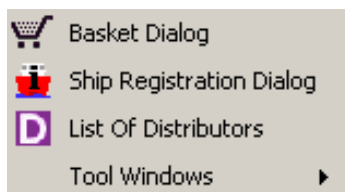
**Cancel** – will cancel the import.

### Exit

This function terminates ADMIRALTY Digital Catalogue.

### Menu Item View

The menu item *View* includes the following functions:

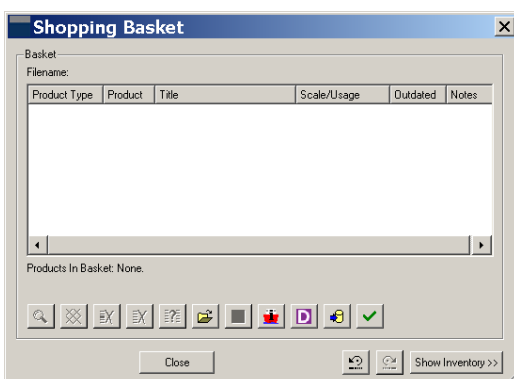


**Figure 10 - Menu item View**

### Basket Dialogue













In the *Shopping Basket* all products that have previously been selected are displayed. A list of products to be ordered can be compiled.

The *Shopping Basket* can also be opened by clicking on  in the *Navigation Bar*.

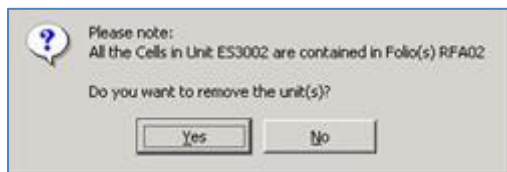


**Figure 11 - Shopping Basket without Inventory**


There are several buttons in the lower part of the *Shopping Basket* window for handling the contents. The functions are:

-  Zoom to selected product(s).
-  If on, selected product(s) will be highlighted in the *Chart Display*.
-  Remove selected product(s) from basket.
-  Remove all products from basket.
-  Mark products in basket that are already in the *Inventory*.
-  Load basket file.
-  Save basket file to a text or CSV file.
-  Edit Ship Information. Opens the *Ship Information/Registration Dialogue*.
-  Show List of Distributors in Browser. Opens the list of UKHO distributors
-  Import Chart Wizard, imports a list of products into the basket.
-  Check if Unit-Cells are included in Folios
-  Undo last Basket or Inventory modification (the redo is a mirror icon).

When AVCS Folios and ENC's are included in the *Shopping Basket* there is the possibility that duplicate ENC's may exist. By clicking on *Check if Unit-Cells are included in Folios* this will check and report any duplication and provide the option to remove any duplicate cells.





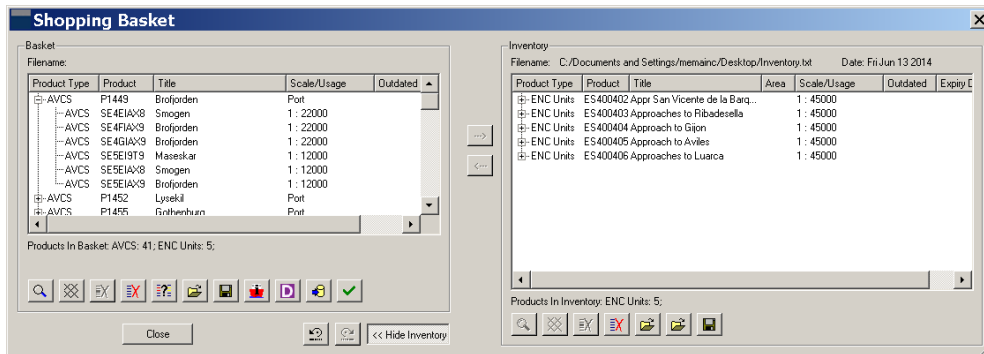
**Figure 12 – Check for duplicate cells**

By clicking on  the *Shopping Basket* window is supplemented with an *Inventory* window. All products which have been selected for or loaded into the *Inventory* are displayed within it.

Clicking on  closes the *Inventory* window.








When the *Inventory* is open products can be exchanged between the *Shopping Basket* and *Inventory*. This is done by means of the two buttons

-  Move selected product(s) from *Basket* to *Inventory*.
-  Copy selected product(s) from *Inventory* to *Basket*.



**Figure 13 - Shopping Basket with open Inventory**

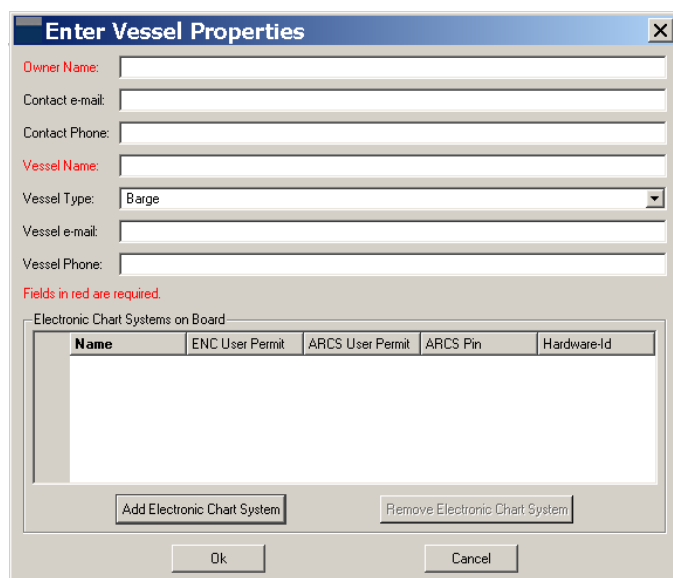
In the *Inventory* there are also several buttons with the following functionality:

-  Zoom to selected product(s).
-  If on, selected product(s) will be highlighted in the *Chart Display*.
-  Remove selected product(s) from *Inventory*.
-  Remove all products from *Inventory*.
-  Load a saved inventory file or a list of products from a text file into the *Inventory*.
-  Load a permit file into the *Inventory*.
-  Save a list of products in *Inventory* to a text file.

### Contents of Basket and Inventory

Both the *Shopping Basket* and *Inventory* include the following columns:

- Product Type    Name of the catalogue the product belongs to.
- Product         Displays the identifier of the product.
- Title             Displays the name of the product.
- Scale/Usage    Either the scale of the chart is displayed or the usage (e.g. Harbour, Approach, etc.), depending on what product is selected.



**Figure 14 - Ship Information / Registration dialogue**

The *Ship Registration Dialogue* asks for information necessary for the ordering of products. The fields in red must be completed as a minimum. The *Vessel Name* is used for naming the basket and inventory file.

The section *Electronic Chart Systems on Board* archives User Permits, ARCS Pin and the Hardware-Id necessary to use digital products. These codes avoid the illegal use and distribution of protected products.

**Note:** *The Electronic Chart Systems on Board section is only visible if there are ARCS or ENC Units in the Shopping Basket.*

### List of Distributors

This function opens the list of registered Distributors, ordered by distributor name. The list of distributors is also accessible from the *Shopping Basket*. It includes a link to the latest online version of the list which allows users to search for a particular distributor either by name or country.

### Tool Windows

This function opens a menu which allows the user to select or deselect any of the entries below in order to display or hide the respective feature. It can also be opened as a context menu by right clicking anywhere except on the chart display.

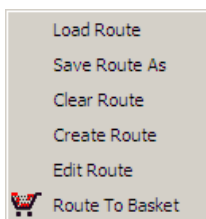
Navigational Globe	Removes / displays the <i>Navigational Globe</i>
Overlay Settings	Removes / displays the <i>Overlay Settings</i>
Usage Settings	Removes / displays the <i>Filter</i> (Scale Ranges or Usages) and the <i>Restore Default Button</i> (Filter).

**Note:** *Item Usage Settings is not available (i.e. is not visible) when the Basket tab or Inventory tab are selected or other tabs where no filter is used.*

Cursor Position	Removes / displays the Cursor Position in <i>The Navigation Bar</i>
Chart Tools	Removes / displays <i>The Navigation Bar</i> .

### Menu Item Route

This menu item facilitates the creation of new routes and the loading and editing of saved or predefined routes. It includes the following entries:



**Figure 15 - Menu item Route**

### Load Route

This function opens a file selection box which allows the selection of a route file with numbered waypoints. The following route files can be loaded:

1. A *.7CB* file (direct ENC *ADMIRALTY Digital Catalogue* format) i.e. a route file created and previously saved in *ADMIRALTY Digital Catalogue*.
2. A text file whose content must follow a defined format, e.g. waypoint lists generated by certain ECDIS systems.
3. Additionally the following decimal lat / long format is accepted:

53.88	9.18
53.88	9.13
53.87	9.09
53.86	9.05
53.85	9.01
53.84	8.93

The coordinates are tab separated and any number of decimal places is acceptable. The Lat & Long coordinates are negative when in the West or South respectively.

**Note: A third field for the designation of the waypoint (Wpt1, Wpt2, Wpt3, etc.) will be generated automatically in ADMIRALTY Digital Catalogue during display.**

Please see chapter **Create Route** unterhalb for how to manually create a route with numbered waypoints in *ADMIRALTY Digital Catalogue*.

### Save Route as

This function saves a created route to a `.7CB` file (directENC). A dialogue is opened to specify the location and name of the route file.

### Clear Route

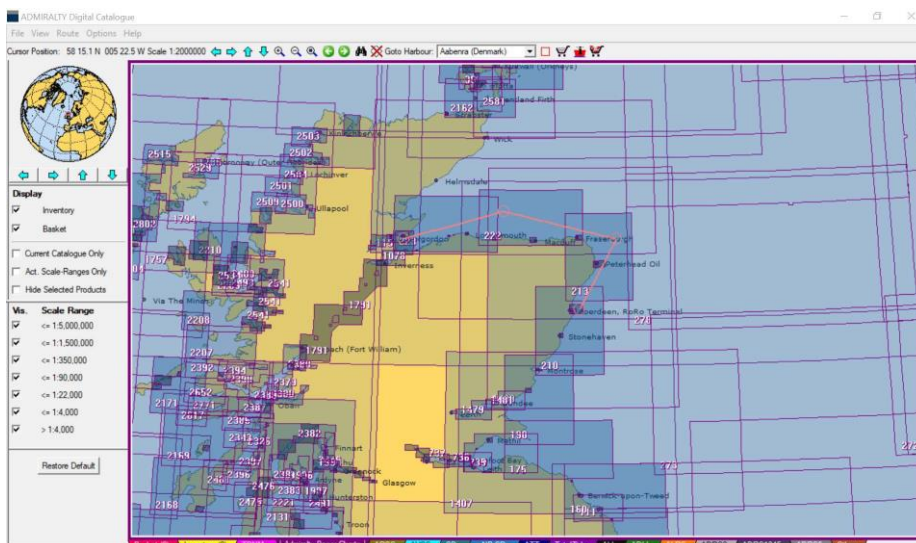
This function removes the route from the *Chart Display*.

### Create Route

After selecting *Create Route* you can position the waypoints of the new route on the chart display. The route is automatically in edit mode (see **Edit Route** unterhalb).

Whenever the left mouse button is clicked a new waypoint is set. The right mouse button will terminate the route. The route is still in edit mode and can be modified if necessary. The edit mode must be deactivated with another right click to apply the changes.

The waypoints are numbered consecutively WP\_001, WP\_002, etc. and will be displayed provided *Display Product Labels and Place Names* is selected (see **Menu Item Options** unterhalb).



**Figure 16 - Creating a new route with names displayed**

**Note: It is not possible to display more than one route at a time.**

## Edit Route

This function toggles between edit mode and non-edit mode. When the route is in edit mode, it is displayed as a solid, thin red line. The waypoints are marked by a circle as in normal display mode but no waypoint name is shown. Whenever the mouse cursor is close to a waypoint, it will change its shape to a four directional arrow, indicating that by clicking here the waypoint can be moved. If the cursor is close to a leg line, its shape turns into a simple 'crosshair' cursor. The cursor indicates that the user can insert a waypoint into this leg. Whenever the first or last waypoint of a route is moved, after setting its new position, a new waypoint is automatically inserted under the cursor. Thus the user can continuously extend the route at either end.

Pressing the *Esc* key while a waypoint is moved will cancel the move and the waypoint will remain at its original position.

Pressing the right mouse button has different meanings, depending on the context. If a waypoint is being moved, pressing the right mouse button will delete it. If no waypoint is moved, pressing the right mouse button will exit the edit mode.

If there were modifications to the route, a window pops up asking whether to apply or discard the changes or offers to continue editing. The edit mode can also be stopped by unchecking the *Edit Route* menu entry.

## Route to Basket

This function loads all the required products of the selected catalogue for a previously defined route into the *Shopping Basket*. All products which are crossed by the route are listed. This list can be edited in the *Shopping Basket*.

## Menu Item Options → Options...

This menu item opens the *Options* dialogue. In it you can set *General Preferences*.

**Note: Preferences which have been set will remain as the default until they are altered again.**

## General Preferences

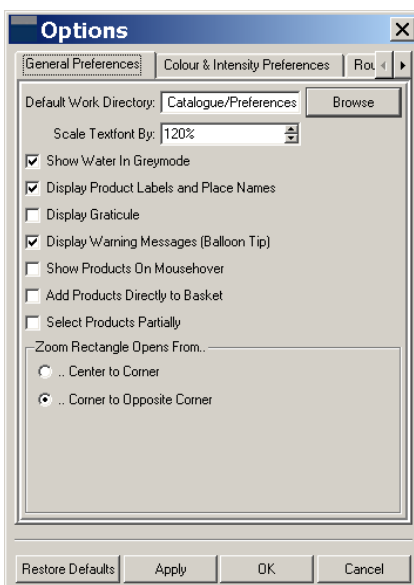

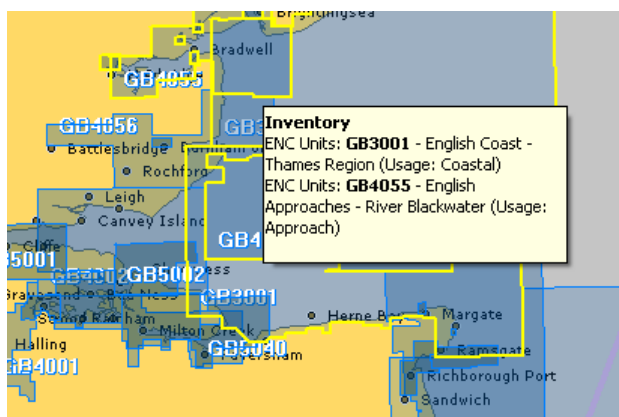


Figure 17 - General Preferences of Options dialogue



In the index card *General Preferences* the following preferences can be set:

Default Work Directory:	Can be selected by clicking on the <i>Browse</i> button
Scale Textfont By:	Sets the size of text – the default is 120% (percentage of the original size)
Show Water in Greymode:	Displays water areas in grey colour, otherwise it is shown in blue
Display Product Labels and Place Names:	Displays product labels and names of waypoints, cities, rivers etc on the chart.
Display Graticule:	Displays a graticule. The distance between the parallels and meridians is determined automatically, depending on the display scale.
Display Warning Messages (Balloon Tip):	Displays warning messages e.g. there are no products available in the basket or inventory, or all usages are invisible.
Show Products on Mouseover:	Opens a window displaying information about the charts at the cursor location.
Add Products Directly to Basket:	When checked this will by-pass the product selection window, adding all products at the selection point directly into the basket.
Select Products Partially:	When selecting products with the selection rectangle,  , this option determines whether the product has to be fully or only partially covered by the rectangle.



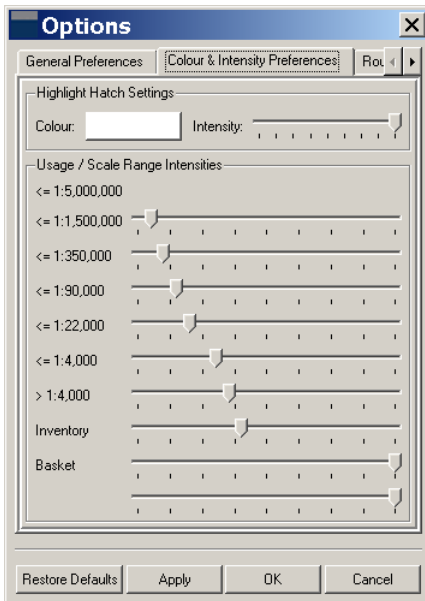
**Figure 18 - Mouse Hover: Display of products of an area the mouse cursor is set on**

### **Zoom Rectangle opens from ...**

- ...Center to Corner
- ...Corner to Opposite Corner
- 

Clicking on *Restore Defaults* at bottom left will set back all changes made to the original default *General Preferences* settings and Route Buffer widths.

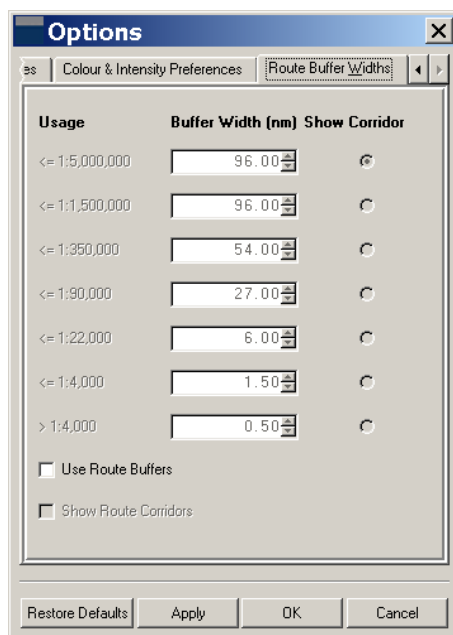
**Colour and Intensity**



**Figure 19 – Colour & Intensity**

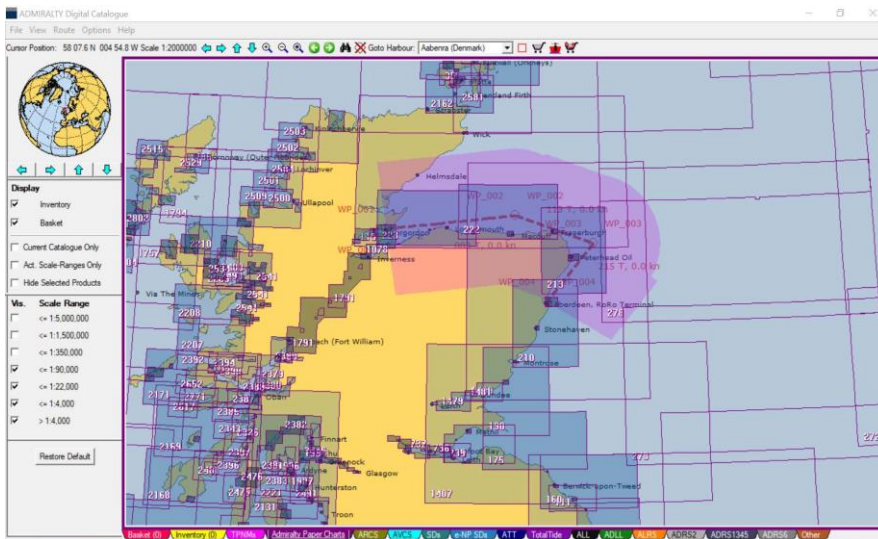
This provides the facility to amend the colour and intensity of the hatching which depicts whether an ENC cell has supplementary information. This information will be displayed in the Notes column of the shopping basket.

**Route Buffer Widths**



**Figure 20 – Route Buffer Widths dialogue**

This dialog enables the user to define buffer widths for route planning. When this is set, all products that intersect the defined buffer will be added to the basket.



**Figure 21 – Route with Buffer Widths defined**

## Menu Item Help

This menu item includes the following entries:

Help (F1) Opens the User's Guide as .pdf document.

About *ADMIRALTY Digital Catalogue*

Gives information about the currently used version of *ADMIRALTY Digital Catalogue* and information about the QT version used to develop *ADMIRALTY Digital Catalogue*.

## The Navigation Bar

At the top of the window below the *Menu Bar* there is the *Navigation Bar*. It facilitates navigating within the *Chart Display*. On the left end of the *Navigation Bar* the *Cursor position* is displayed.

Cursor Position: 51 36.0 N 010 13.8 W







**Figure 22 - Cursor position in the Navigation Bar**










To the left of the cursor position display there are several buttons in the *Navigation Bar*.




**Figure 23 - The Navigation Bar**

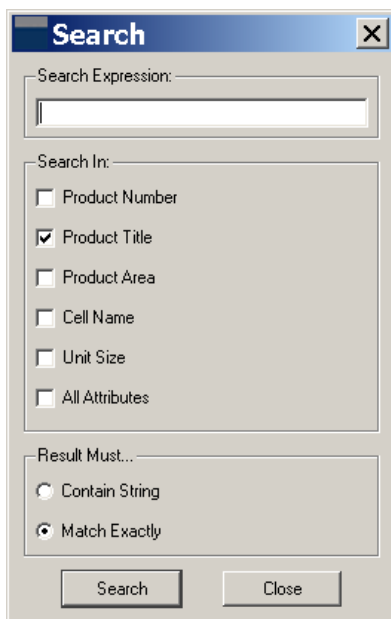
The buttons have the following functions:

-  Scroll Left (Left)
-  Scroll Right (Right) Shifts the display window to the right (chart to the left).
-  Scroll Up (Up) Shifts the display window upwards (chart downwards).
-  Scroll Down (Down) Shifts the display window downwards (chart upwards).
-  Zoom In (PgDown) Enlarges the display scale of the chart currently displayed (reduces the size of the displayed area).
-  Zoom Out (PgUp) Reduces the display scale of the chart currently displayed (enlarges size of the displayed area).

	Maximum Zoom Out (Ctrl+PgUp)	
	View Backward (Backspace)	Goes back to the previous view. Grey when disabled.
	View Forward (Ctrl+Backspace)	Goes forward to the next view. Grey when disabled.
	Search (Ctrl+F)	Opens the <i>Search</i> window.
	Clear Highlights (Ctrl+H)	Turns off highlights (see respective button to highlight products in the <i>Shopping Basket</i> and <i>Inventory</i> ).
<b>Goto Harbour:</b>		Selection of a harbour from a drop-down list or enter part of the harbour name to search.
	Select Products For Basket By Rectangle (Ctrl+R)	Product selection rectangle option. All available products from the current catalogue, wholly within a rectangle, will be selected and displayed in the <i>Products Found In</i> window.
	Open Basket (Ctrl+B)	Opens the <i>Shopping Basket</i> window.
	Open Ship Registration (Ctrl+S)	Opens the <i>Ship Information / Registration Dialogue</i> (see chapter <b>Ship Registration Dialogue</b> ).
	Route to Basket (Ctrl+O)	Loads all products from the selected catalogue required for a previously defined route into the <i>Shopping Basket</i> .

## Search

The *Search* window is opened by clicking on the  button in the *Navigation Bar*.



**Figure 24 - The Search window**

In the *Search Expression* input field you can enter either the number of the product you are looking for, or the name of the product or the product area.

You can also define whether the entered character string is contained in the result, or whether it must be an exact match. Under *Result Must...* at the bottom of the window tick:

- Contain String or
- Match Exactly

It is also possible to define whether the search shall be carried out for

- Product Number
- Product Title
- Product Area
- Cell Name
- Unit Size
- All Attributes

**Note:** When Product Number is selected Product Title and Product Area are disabled. However, it is possible to search for Product Title and Product Area either separately, or in combination.

### Search in Product Number

After selecting the catalogue which contains the desired product, enter the product number and click on *Search*. The result will be displayed in the *Products Found In* window.

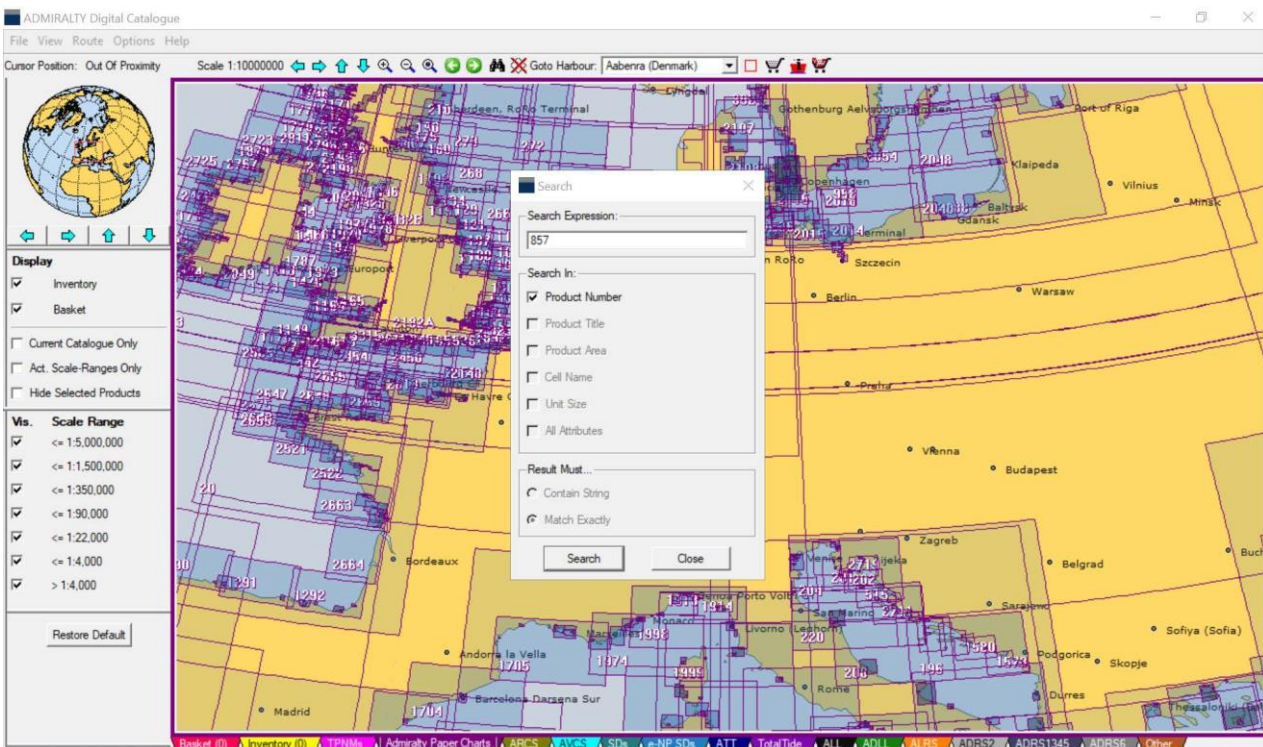


Figure 25 - Search for product number 857 in the ARCS (Raster Charts) Catalogue

To determine the name of the individual ENC units shown on the display, select ENC Units. As the image is zoomed in, ENC unit names will be displayed on the Chart Display. Alternatively if *Show Products on Mouseover* has been selected, then details will be displayed when the mouse is placed over the unit.

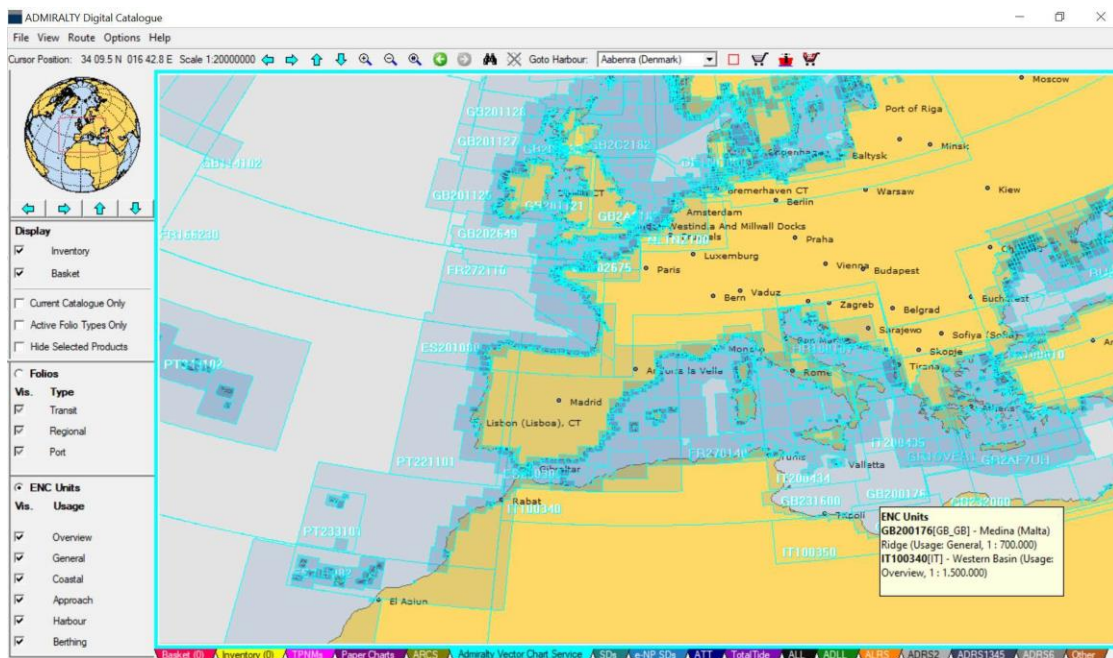


Figure 27 – ENC details shown



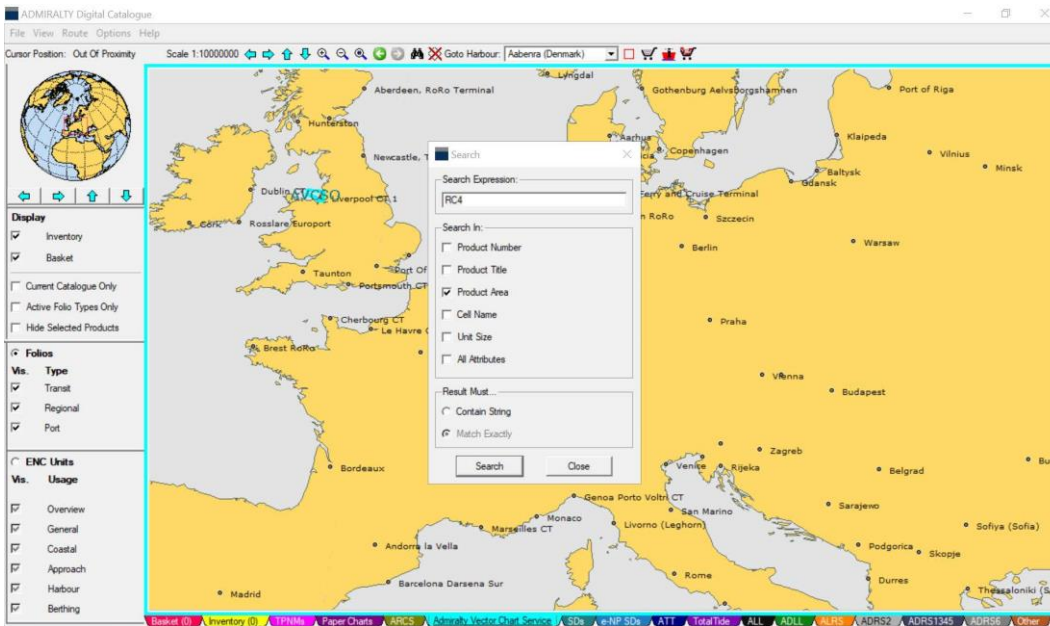
## Search in Product Title

After selecting the catalogue which contains the desired product, enter the title and click on *Search*. The result will be displayed in the *Products Found In* window.

It is possible to enter the complete name of the desired product, or a part (string) of the name. No wildcards are required.

## Search in Product Area

If you want to search for the *Product Area* you must enter an *Area Code*, from the respective catalogue, into the *Search Expression* field. This search is primarily used for the ARCS areas, e.g. RC4 etc.



**Figure 28 - Entering Product Area (RC4 from the ARCS Catalogue)**

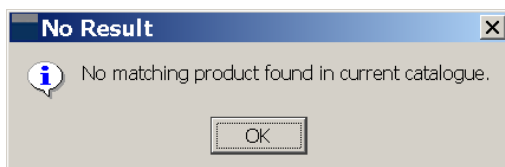
## Search in All Attributes

This will allow the user to search on all product data including product title, IDs etc.

The result will be displayed in the *Products Found In* window.

## Found Products

When no data matches the search criteria in the currently selected catalogue the following message will be displayed.



**Figure 29 - The Warning window**

The results of the various search operations are displayed in the *Products Found In* window. The *Products Found In* window is opened by either the *Search* operation or by right clicking into the *Chart Display*.

**Note:** When right clicking into the chart display only visible products (filtered by the Overlay Settings and the Usage / Scale Filter) will be listed in the *Products Found In* window.

Product Type	Product	Title	Highlight	Basket	Inventory	Usage(s)	Scale
ARCS	1210	Ports on the East Coast of Sardegna	Normal Display	Add	Add	Approach	1:30.000
ARCS	1212	Approaches to La Maddalena	Normal Display	Add	Add	Harbour	1:10.000
ARCS	131	Ports on the West Coast of Italy	Normal Display	Add	Add	Approach	1:60.000
ARCS	1424	Ports on South & West Coasts Corse	Normal Display	Add	Add	Approach	1:60.000
ARCS	1425	Ports on North & East Coasts Corse	Normal Display	Add	Add	Approach	1:50.000
ARCS	906	Ports on the West Coast of Italy	Normal Display	Add	Add	Coastal	1:100.000
ARCS	953	Approaches to Civitavecchia	Normal Display	Add	Add	Approach	1:30.000
ARCS	1211	Capo Ferro to Capo Coda Cavallo	Normal Display	Add	Add	Approach	1:50.000
ARCS	1213	Bonifacio Strait	Normal Display	Add	Add	Approach	1:51.706
			All On	Add All	Add All		
			All Off	Remove All	Remove All		

Close

Colours: Basket Inventory Both

**Figure 30 - Products Found In window**

For each found product the *Product Type*, *Product* number, *Title*, *Usage* and *Scale* are given. It is also possible to sort the products according to one of these characteristics by clicking on the title of the respective column.

In addition, there are three more columns in the *Products Found In* window:

### Highlight Products

It is possible to highlight one or more products in the *Chart Display*. This is done by clicking on *Highlight* in the product row. For highlighted products *Normal Display* is shown instead. Clicking on it will turn off the highlighting.

- All On                                    highlights all listed products
- All Off                                    turns off the highlighting of all listed products

**Note:** It is possible to set all highlighted products back to normal display at once. This is done by clicking on the button **Clear Highlights**  in the Navigation Bar.

**Note:** Clicking on the title of a product (rather than on *Highlight*) will zoom to the product and highlight it.

### Adding Products to Basket

By clicking on *Add* in the *Basket* column you can add the found product to the *Shopping Basket* (or *Remove* it, respectively).

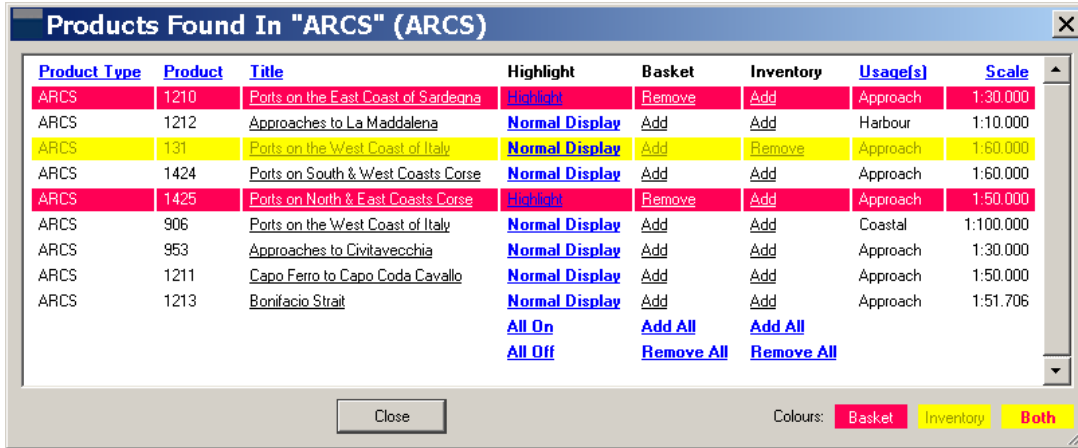
After the product has been put into the *Basket* the text is highlighted by a red bar (see **below**).

### Adding Products to Inventory

By clicking on *Add* in the *Inventory* column you can add the found product to the *Inventory* (or *Remove* it, respectively).

After the product has been put into the *Inventory* the text is highlighted by a yellow bar (see **below**).





Product Type	Product	Title	Highlight	Basket	Inventory	Usage(s)	Scale
ARCS	1210	Ports on the East Coast of Sardegna	Highlight	Remove	Add	Approach	1:30.000
ARCS	1212	Approaches to La Maddalena	Normal Display	Add	Add	Harbour	1:10.000
ARCS	131	Ports on the West Coast of Italy	Normal Display	Add	Remove	Approach	1:60.000
ARCS	1424	Ports on South & West Coasts Corse	Normal Display	Add	Add	Approach	1:60.000
ARCS	1425	Ports on North & East Coasts Corse	Highlight	Remove	Add	Approach	1:50.000
ARCS	906	Ports on the West Coast of Italy	Normal Display	Add	Add	Coastal	1:100.000
ARCS	953	Approaches to Civitavecchia	Normal Display	Add	Add	Approach	1:30.000
ARCS	1211	Capo Ferro to Capo Coda Cavallo	Normal Display	Add	Add	Approach	1:50.000
ARCS	1213	Bonifacio Strait	Normal Display	Add	Add	Approach	1:51.706

Figure 31 - Products Found In window displaying product in Shopping Basket and Inventory

If a product is in both the *Basket* and *Inventory* then it is highlighted in red text over a yellow bar.

- Add All                                    Adds all listed products to the *Basket* or *Inventory*
- Remove All                                Removes all listed products from the *Basket* or *Inventory*
- Legend:                                     At the bottom right corner shows the meaning of the colours used in the list.

**Goto Harbour**

This function incorporates an index of ports and harbours of the world in alphabetical order. As well as scrolling through the list it is possible to type in a part of the harbour/port name and the catalogue will show the best match.

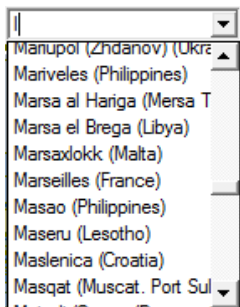


Figure 32 - Drop-down list Goto Harbour

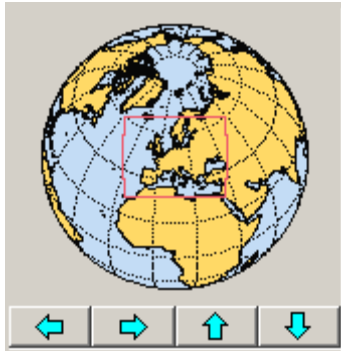
When a port is selected the *Navigational Globe* and the *Chart Display* will change to show the selected harbour in the centre of the respective display.

Port selection can be aided by typing the first letter of the port name.

**The Navigational Globe**

There is a *Navigational Globe* plus four arrow keys displayed in the top left of the *ADMIRALTY Digital Catalogue* screen. The arrow keys can be used for navigating around the globe.

Use *View* → *Tool Windows* to turn the globe on and off, or right click outside of the *Chart Display*.



**Figure 33 - Navigational Globe**

With the arrow buttons the globe can be rotated left, right, up or down.

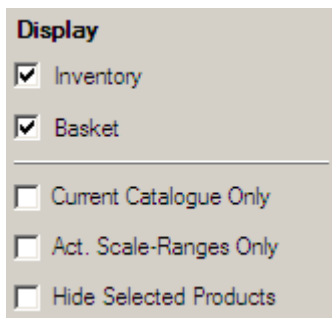
Left clicking any position on the globe will display this position as the new centre of both the globe display and the *Chart Display* at the current scale.

When a port is selected (see **Goto Harbour oben**) this port will become the centre of the globe display.

The current view of the *Chart Display* is indicated by a red rectangle on the globe.

## Overlay Settings

Selecting / deselecting will display / hide the products which are in the *Shopping Basket* or *Inventory* overlaid in the various catalogues as red or yellow limits respectively.



**Figure 34 - Overlay Settings**

The lower section offers options for the *Shopping Basket* and *Inventory* overlay display in the different catalogue tabs.

- *Current Catalogue Only*: Overlays only the products in the *Shopping Basket* or *Inventory* of the currently selected catalogue tab. Deselect it to view all products which are in the *Shopping Basket* or *Inventory* from all catalogues.
- *Act.(ive) Usages/Scale Ranges Only*: Overlays only the products in the *Shopping Basket* or *Inventory* of the currently selected usages / scale ranges. Deselect it to view all products which are in the *Shopping Basket* or *Inventory* from all usages / scale ranges.
- *Hide Selected Products*: Hides/clears all products on the *Chart Display* from the currently selected catalogue tab which are already in the *Shopping Basket* or *Inventory*.

**Note:** The option *Hide Selected Products* slows down the display.

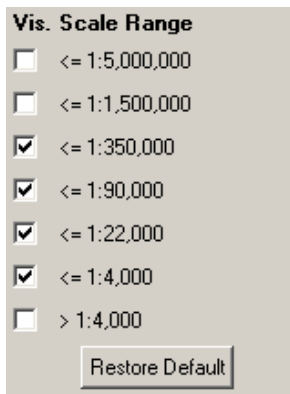
## Filter

In the *Filter* area (*View* → *Tools Window* → *Usage Settings*) of the *ADMIRALTY Digital Catalogue* user interface you can select one or more Scale Ranges, Usages or Levels for display depending on the product selected and displayed in the *Chart Display*.

**Note:** *The Products Found In for each right click on the Chart Display is based on the selected (activated) Scale Ranges, Usages or Levels only.*

### Scale Ranges (T&P NMs, Paper Charts & ARCS)

Each paper chart or ARCS chart has a particular scale. They can be viewed on the *Chart Display* by scale range. By ticking (or deselecting) *Vis.(ible)* single scale ranges can be displayed or hidden.

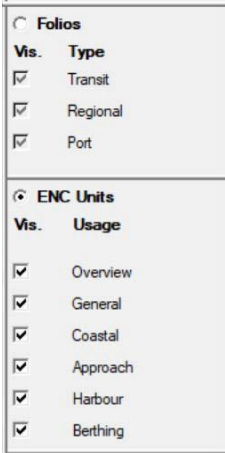


**Figure 35 - Scale Range Settings (T&P NMs, Paper Charts & ARCS)**

### Folios and ENC's (AVCS)

The *ADMIRALTY Vector Chart Service (AVCS)* can be ordered and viewed in two ways – ENC's or Folios. The display can be adjusted by selecting either ENC or Folios.

ENC's consist of 6 usage bands – Overview, General, Coastal, Approach, Harbour and Berthing. Each ENC is assigned to a particular usage band (for navigational purposes). They can be viewed on the *Chart Display* by usage band. By ticking (or deselecting) *Vis.(ible)*, single usages can be displayed or hidden.



**Figure 36 – Folios and ENC Settings (AVCS)**

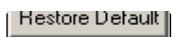
Folios consist of three groups – Transit, Regional and Port. By ticking (or deselecting) Vis.(ible), single Folio types can be displayed or hidden. Please note that only two folios are now available in AVCS which are PAYSF and AVCSO. These are both listed under Transit folios.



**Figure 37 - Level Settings**

## Restore Default Button (Filter)

Clicking on *Restore Default* will set back all changes made to the filter settings.



**Figure 38 - Restore Default button**



## The Chart Display

All products can be viewed in the *Chart Display*.

The desired geographic area can be selected either by using the *Navigational Globe* or by the 'grab and pan' facility available when the middle mouse button (wheel) is pressed. It is also possible to enter a port name (see chapter **Goto Harbour oben**) or to search for a certain product (see **Search oben**).

A single click with the middle mouse button will set a new centre. Clicking, holding and dragging the left mouse button will open a rectangle defining the new view.

Select any of the catalogues in the *Tab Bar* to view the chart types / products or select the *Shopping Basket* or the *Inventory* to view the contents.

Charts and products can be selected on the *Chart Display* and added to the *Shopping Basket* by either opening the *Products Found In* dialogue using the right mouse button, and clicking on *Add* or using the function *Select Products for Basket by Rectangle* (click  from the *Navigation Bar*) or by using the *Route to Basket* function. The *Products Found In* dialogue can also be opened by using the *Search* function (click  from the *Navigation Bar*, see **Search oben**).

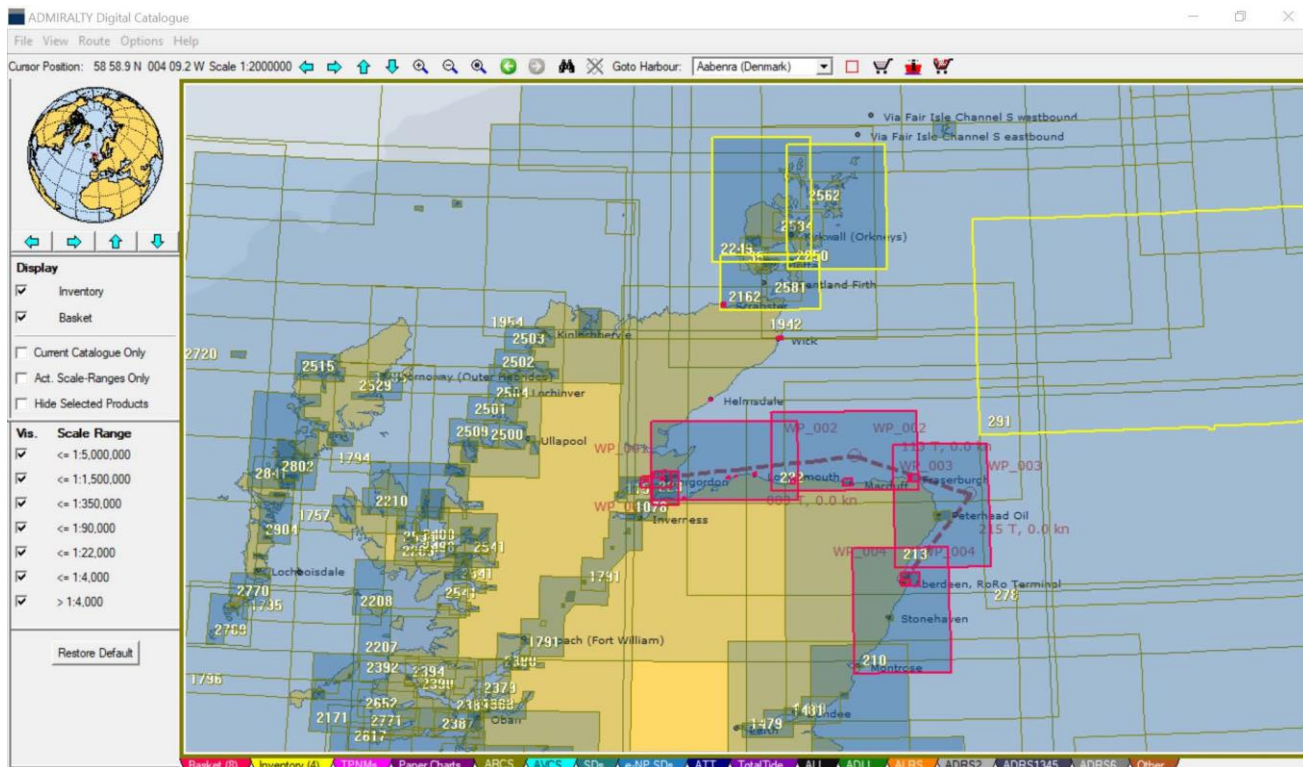
By default products contained in the *Shopping Basket* or the *Inventory* are always shown in the *Chart Display*, regardless of the tab currently selected. However, they can be turned off (made invisible) by using the *Overlay Settings*.

By default products in the *Shopping Basket* are displayed with red outlines, while products in the *Inventory* have yellow outlines.

When the tabs *Contents of Basket* or *Contents of Inventory* in *The Tab Bar* are selected the products will be displayed in the colours of the respective catalogues containing these products.

By means of the *Basket Overlay Settings* and *Inventory Overlay Settings* (see **Overlay Settings oben**) you can specify whether products which are in the *Shopping Basket* or *Inventory*, of all catalogues, or only of the selected catalogue shall be shown. Additionally, products already in the *Shopping Basket* or *Inventory* can be hidden from the display.

In the following figures there are three examples how products can be presented in the *Chart Display*.



**Figure 39 - Display of products from the ARCS catalogue including products that have been previously loaded into the Basket (red outline) and Inventory (yellow outline)**



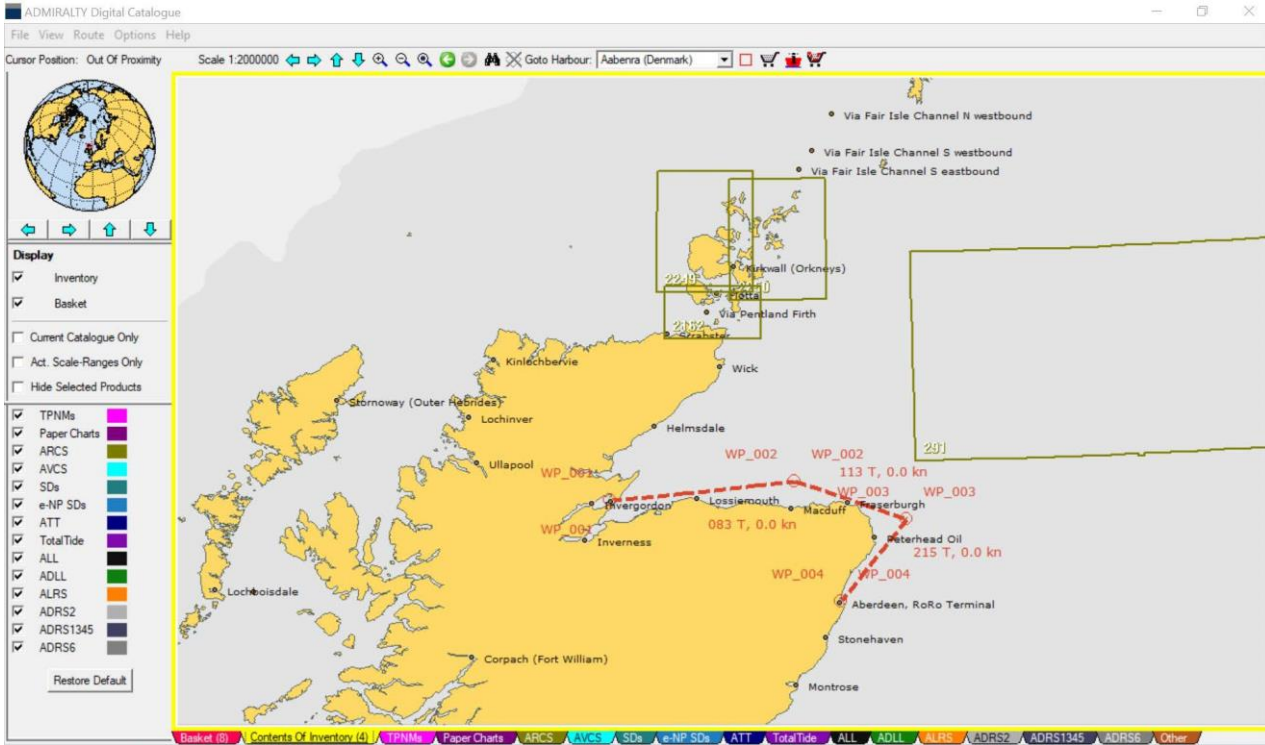


Figure 40 - Display of Contents of Basket including products from the ARCS catalogue (olive-coloured). The products with the yellow outline are in the Inventory.

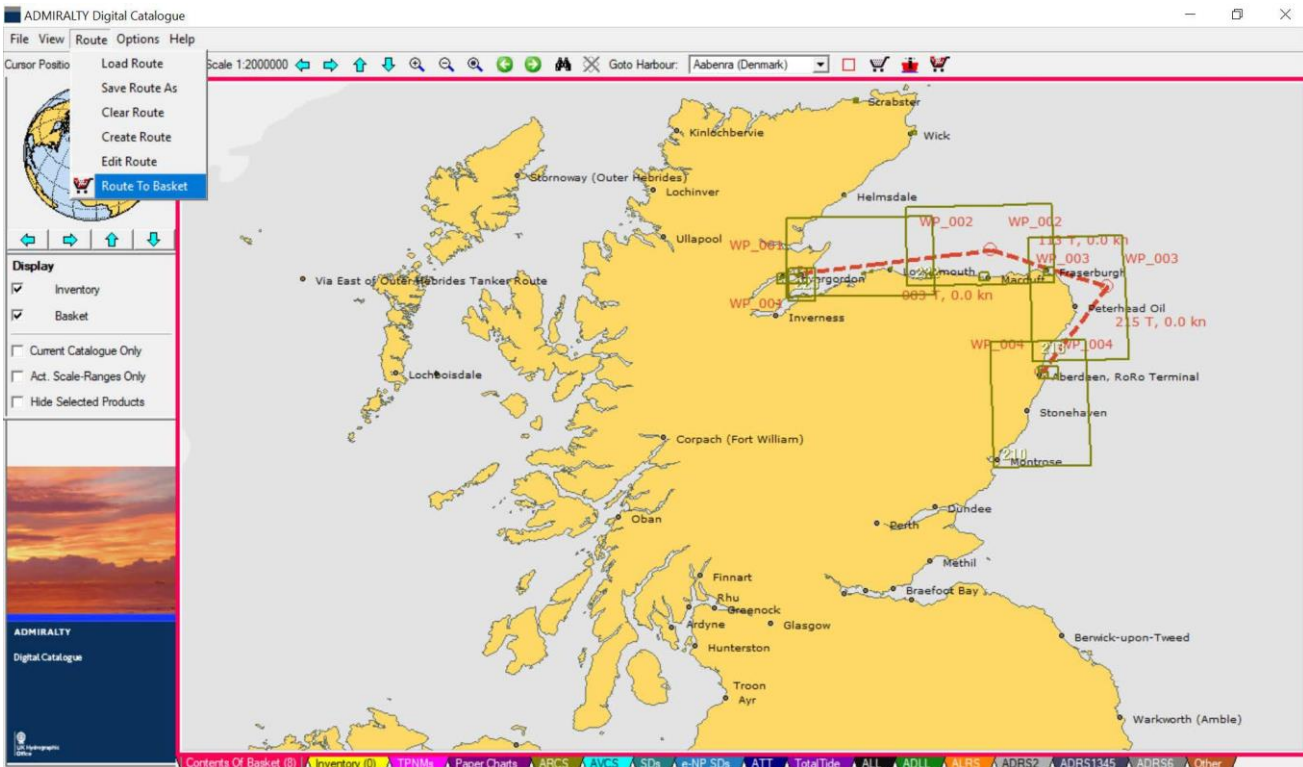


Figure 41 - Display of the Contents of Inventory which contains products from the ARCS catalogue (shown by olive outline).

Right clicking on the *Chart Display* opens the *Products Found In* dialogue box showing all products of the selected catalogue that are found at the clicked position.

## T&P NMs

T&P NMs contain information that is sufficiently significant to need to be communicated to the mariner but which is either too transient (e.g. works in this area for 8 weeks) for a standard NM or needs communicating too quickly to have completed the appropriate NM action (e.g. a new port operation that will require a New Edition to depict it properly).

T&P NM information is currently provided with reference to specific paper chart products however the information contained is relevant to the user of any chart products in the area covered.

The *TPNMs* tab displays the limits of all affected charts.

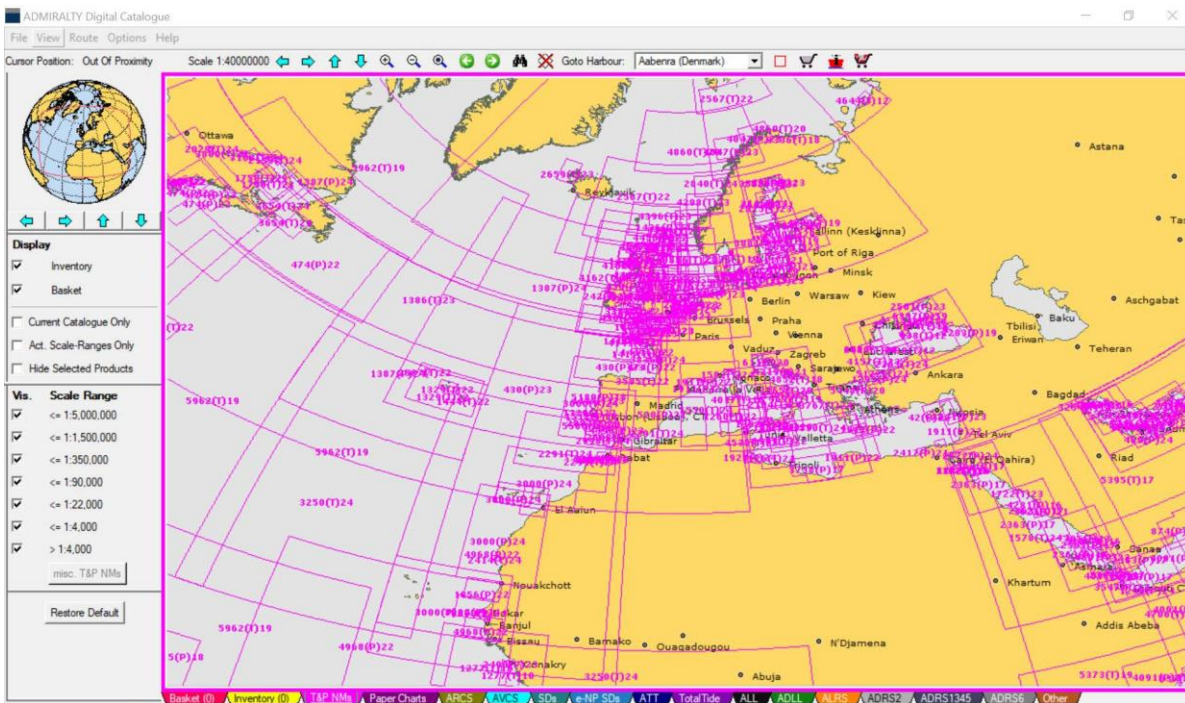


Figure 42 - Display of the T&P NMs tab

T&P NMs that are not associated with a specific chart can be displayed by selecting the *misc T&P NMs* button.

To select T&P NMs associated with a specific chart right click on the appropriate chart and a list of associated T&P NMs will be displayed.

Product Type	Product	Title	Highlight	View	Charts Affected
T&P NM	5432 (T)/2013	ENGLAND - Eastern Approaches to the Solent - Nab Tower - Light	<a href="#">Highlight</a>	<a href="#">View</a>	2- 2037 - 2045 - 2450 - 2656 - 2675 - 4140
T&P NM	284 (T)/2014	CELTIC SEA - Nymphen Bank SE and Cockburn Bank SE - Scientific instruments - Buoyage	<a href="#">Highlight</a>	<a href="#">View</a>	1123 - 1178 - 2649
T&P NM	1019 (T)/2014	IRELAND - Porcupine Seabight N - Data collection buoy	<a href="#">Highlight</a>	<a href="#">View</a>	2- 4011 - 4014 - 4102
T&P NM	4085 (P)/2012	NORTH SEA - TSS Off Botney Ground - Western Mud Hole Northwards - Submarine pipeline	<a href="#">Highlight</a>	<a href="#">View</a>	1187 - 1423 - 1632 - 2182A - 2182B - 4140
T&P NM	5383 (T)/2010	FRANCE - Boulogne-Sur-Mer South-westwards - Radar beacon	<a href="#">Highlight</a>	<a href="#">View</a>	2451 - 2675
T&P NM	5102 (T)/2011	FRANCE - Dieppe Northwards - Buoy - Automatic Identification System - Restricted area	<a href="#">Highlight</a>	<a href="#">View</a>	2148 - 2451 - 2675
T&P NM	1934	FRANCE - Raie de Saint-Brieuc - Approaches to Saint-Malo - Measuring	<a href="#">Highlight</a>	<a href="#">View</a>	2028 - 2029 - 2648

Figure 43 – List of T&P NMs available

To view the contents of the T&P NM select *View* or *View All*.

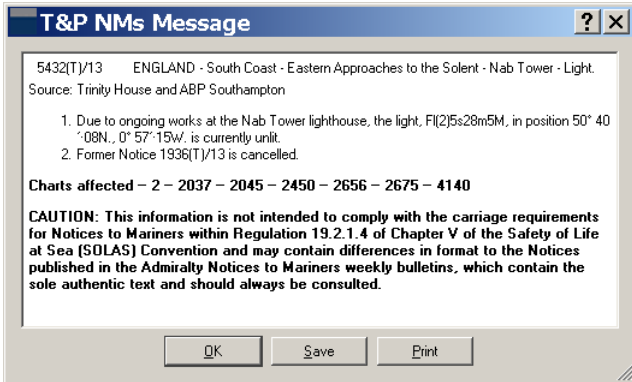


Figure 44 – T&P NMs window

From this window it is possible to either save the T&P NM as an html file or to print the contents of the T&P NM file. When the *TPNMs* tab has been selected, the *Search* window is replaced to allow T&P NMs to be selected by number, text, title, date or chart number.

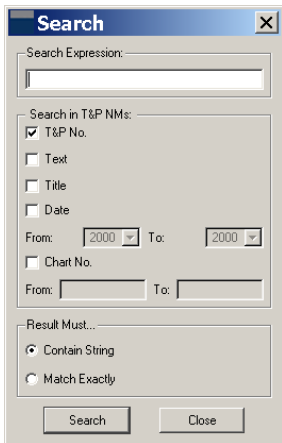


Figure 45 – T&P NMs Search window

## Other Products

The *Other* tab includes the ADMIRALTY range of Thematic Charts and Miscellaneous Publications. These products do not benefit by being displayed graphically on the Chart Display and so are presented as categorized lists within a new plain window that replaces the *Chart Display*. They are selected from a drop-down list at the top of the window.

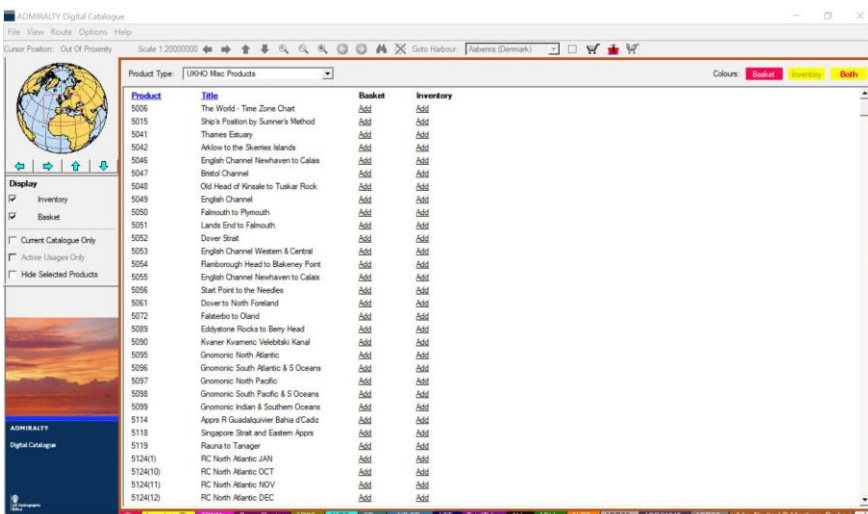


Figure 46 – The Other Products Window (Thematic Charts and Miscellaneous Publications)



## The Tab Bar

The *Tab Bar* at the bottom of the *ADMIRALTY Digital Catalogue* user interface is used to control the contents of the *Chart Display*. It consists of a series of coloured tabs.



Figure 47 - The Tab Bar

### The current set of tabs (left to right):

Basket	Contents of Basket
Inventory	Contents of Inventory
TPNMs	T&P NM information
Paper Charts	British ADMIRALTY Paper Chart Service (SNCs)
ARCS	ADMIRALTY Raster Charts (ARCS)
AVCS	ADMIRALTY Vector Chart Service (ENCs and AVCs)
SDs	ADMIRALTY Sailing Directions (Pilots)
e-NP SDs	ADMIRALTY e-Nautical Publications (AENPS)
ATT	ADMIRALTY Tide Tables
TotalTide	ADMIRALTY TotalTide
ALL	ADMIRALTY List of Lights
ADLL	ADMIRALTY Digital List of Lights
ALRS	ADMIRALTY List of Radio Signals
ADRS2	ADMIRALTY Digital Radio Signals Vol. 2
ADRS6	ADMIRALTY Digital Radio Signals Vol. 6
Other	Other Products (Thematic Charts and Miscellaneous Publications)

## The Context Menus

A context menu is available in the *Tab Bar*. It is opened by right clicking the respective tab and allows the deletion of a single catalogue. To reinstall that catalogue it must be downloaded again or installed from disk, similar to updating a catalogue (see **Catalogue oben**).

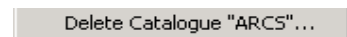


Figure 48 - Context Menu on Tab Bar: Delete Catalogue

Whenever you right click on the *ADMIRALTY Digital Catalogue* user interface (apart from the *Chart Display* and the attached *Tab Bar*) a second *Context Menu* opens.

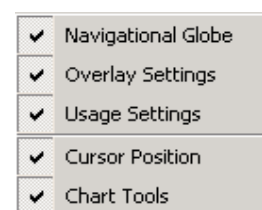


Figure 49 - Context Menu on User Interface

Selecting or deselecting any of these entries will display or hide the respective feature. See **Tool Windows open** for detailed explanations of the single entries.

***Note: The item Usage Settings is not available when Basket, Inventory and single usage products are selected / displayed, e.g. SDs.***

## 5. Table of Figures

Figure 1 - Window Catalogue Warning .....	6
Figure 2 - ADMIRALTY Digital Catalogue User Interface .....	7
Figure 3 - The Menu Bar.....	7
Figure 4 - Menu item File.....	8
Figure 5 - Available Catalogue Updates dialogue.....	8
Figure 6 - Catalogue Status.....	9
Figure 7 - Message window to overwrite or merge contents of Inventory .....	10
Figure 8 – Import Chart List.....	10
Figure 9 – Import Chart List.....	11
Figure 10 - Menu item View.....	11
Figure 11 - Shopping Basket without Inventory .....	11
Figure 12 – Check for duplicate cells.....	12
Figure 13 - Shopping Basket with open Inventory .....	13
Figure 14 - Ship Information / Registration dialogue.....	13
Figure 15 - Menu item Route.....	14
Figure 16 - Creating a new route with names displayed.....	15
Figure 17 - General Preferences of Options dialogue .....	16
Figure 18 - Mouse Hover: Display of products of an area the mouse cursor is set on.....	17
Figure 19 – Colour & Intensity .....	18
Figure 20 – Route Buffer Widths dialogue.....	18
Figure 21 – Route with Buffer Widths defined .....	19
Figure 22 - Cursor position in the Navigation Bar .....	19
Figure 23 - The Navigation Bar.....	19
Figure 24 - The Search window.....	20
Figure 25 - Search for product number 857 in the ARCS (Raster Charts) Catalogue.....	21
Figure 26 – ENC Limits shown for selected AVCS Folio .....	21
Figure 27 – ENC details shown .....	22
Figure 28 - Entering Product Area (RC4 from the ARCS Catalogue) .....	23
Figure 29 - The Warning window.....	23
Figure 30 - Products Found In window .....	24
Figure 31 - Products Found In window displaying product in Shopping Basket and Inventory .....	25
Figure 32 - Drop-down list Goto Harbour.....	25
Figure 33 - Navigational Globe .....	26
Figure 34 - Overlay Settings.....	26
Figure 35 - Scale Range Settings (T&P NMs, Paper Charts & ARCS).....	27
Figure 36 – Folios and ENC Settings (AVCS) .....	28
Figure 37 - Level Settings (ECDIS Service) .....	28
Figure 38 - Restore Default button .....	28
Figure 39 - Display of products from the ARCS catalogue including products.....	29
Figure 40 - Display of Contents of Basket including products from the ARCS catalogue.....	30
Figure 41 - Display of the Contents of Inventory which contains products from the ARCS catalogue.....	30
Figure 42 - Display of the T&P NMs tab .....	31
Figure 43 – List of T&P NMs available .....	31
Figure 44 – T&P NMs window .....	32
Figure 45 – T&P NMs Search window.....	32
Figure 46 - The Other Products Window (Thematic Charts and ALRS Vols 1-5) .....	32
Figure 47 - The Tab Bar .....	33

---

Figure 48 - Context Menu on Tab Bar: Delete Catalogue.....	33
Figure 49 - Context Menu on User Interface .....	33

## 6. Glossary

---

<b>Basket / Shopping Basket</b>	Dialogue to manage the products to be ordered (see <b>Basket</b> )
	<p>Contains the products which have been collected in the <i>Shopping Basket</i> and saved with <i>File</i> → <i>Save Basket</i>. The file is named <i>order_vesselname_YYYYMMDD.txt</i>. The contents of the basket file can be shown in <i>ADMIRALTY Digital Catalogue</i> with <i>File</i> → <i>Load Basket...</i> and, if loaded, clicking on the <i>Basket</i> tab (see chapters <b>Save Basket...</b>, <b>Load Basket...</b> and <b>The Tab Bar</b>).</p>
<b>Basket File</b>	<p>The basket file is a tab separated file with the following columns:</p> <ol style="list-style-type: none"> <li>1. Product Type</li> <li>2. Product Number</li> </ol>
<b>Catalogue</b>	Collection of products of certain type (e.g. ENCs, ARCS, BA paper charts, List of Lights), shown on the <i>Chart Display</i> (see <b>The Tab Bar</b> )
<b>Inventory Dialogue</b>	Dialogue to manage the products which are already on board (see <b>Basket</b> )
	<p>Contains the products of the <i>Inventory</i> which have been saved with <i>File</i> → <i>Save Inventory...</i> The file is named <i>inventory_vesselname_YYYYMMDD.txt</i>. The contents of the inventory file can be shown in <i>ADMIRALTY Digital Catalogue</i> with <i>File</i> → <i>Load Inventory...</i> and, if loaded, clicking on the <i>inventory</i> tab (see <b>Save Inventory...</b>, <b>Load Inventory...</b> and <b>The Tab Bar</b>)</p>
<b>Inventory File</b>	<p>The inventory file is a tab separated file with the following columns:</p> <ol style="list-style-type: none"> <li>1. Product Type</li> <li>2. Product Number</li> </ol>

## 7. Trouble Shooting

---

### Frequently Asked Questions

#### How do I order chart units?

There are two ways to collect the appropriate charts and products:

1. Based on a defined route:
  - Create or import your route
  - Select the appropriate catalogue(s) and click *Route to Basket* from the *Navigation Bar*. All products, from the currently selected catalogue tab, crossed by the route are transferred to the *Shopping Basket*.
  - Any product which is not required can be removed in the *Basket* dialogue.
2. Manual selection of products
  - Select the appropriate catalogue(s)
  - Open the *Products Found In* dialogue by right clicking on the required products or by using the *Search* function. Use the *Add/Remove* functions in the *Products Found In* dialogue.

The contents of the *Shopping Basket* are shown in the *Basket* catalogue (select *Basket* from the *Tab Bar*). Once all required products from the different catalogues are in the *Shopping Basket* you can save a basket file. The file is named: order\_YYYYMMDD.txt or order\_vesselname\_YYYYMMDD.txt if the *Ship Registration Dialogue* has been completed.

The basket file can then be sent/emailed to a distributor.

#### How do I maintain the inventory?

Once you have received the products from your distributor the list of charts and products must be transferred to the *Inventory*. Since the basket file contains exactly this information it is recommended that you:

- reload the basket file into the *Shopping Basket*
- open the *Basket* dialogue
- transfer the products to the *Inventory* using the transfer arrows between the *Basket* and *Inventory* section.
- save the products in the *Inventory* as an inventory file.
- If additional products are required the inventory file can be re-loaded in order to compare the stock of products with a new selection. The missing products can then be ordered.

#### The unit numbers shown in the chart display are illegible?

This is a problem with the "cleartype" engine of windows. Please set your windows display options from 'cleartype' to 'standard'. This can be found in *Control Panel* → *Display* → *Appearance* → *Effects* → *Checkbox "use the following method to smooth edges of screen fonts:"* → select: *standard*.

## About us

The UK Hydrographic Office is a global centre for hydrographic understanding, delivering data and expertise to support safe, secure and thriving oceans.

## Trusted by customers and partners worldwide

We deliver quality innovative maritime navigation solutions through our ADMIRALTY products and services, which are relied upon by over 90% of large ships trading internationally to support safety, efficiency and compliance.

For more information, contact our global network of ADMIRALTY Distributors. Alternatively, contact our customer service team.



UK Hydrographic  
Office

Admiralty Way, Taunton, Somerset  
TA1 2DN, United Kingdom

Telephone +44 (0)1823 484444  
customerservices@ukho.gov.uk

[gov.uk/ukho](http://gov.uk/ukho)

Discover more about our market-leading  
ADMIRALTY products and services:

[admiralty.co.uk](http://admiralty.co.uk)    

ADMIRALTY and  are trademarks of the Secretary of State for Defence