

# Keeping charts up to date

November 2022

## Step-by-step instructions on updating Small Craft Charts

*"As an officer and a navigator, I have ever looked with horror on neglect and indolence and have never yet crossed the seas without that foresight which is necessary to the well-doing of the voyage."*

In a few words, Captain Bligh described the nature of good seamanship. Proper care of charts is a necessary foresight and keeping your charts up-to-date according to the latest Notices to Mariners is crucial.

### Why update your charts?

Small Craft leisure mariners often say, "Rocks don't move!". True, they tend to remain firmly in situ. However, changes in buoyage and lights, new wrecks, temporary obstructions or depth changes in rivers and estuaries are examples of updates to charts that are critical to safe navigation.

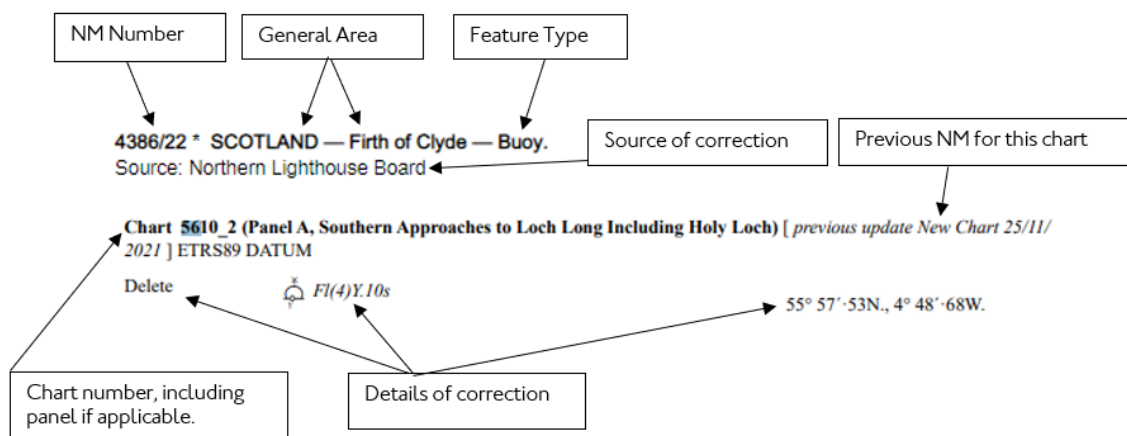
### What do I need?

The essentials are a fine point pen (preferably magenta so that it shows up clearly), a copy of Chart 5011 – Symbols and Abbreviations used on ADMIRALTY Charts, and internet access to the free-of-charge ADMIRALTY Notices to Mariners website: <https://www.admiralty.co.uk/maritime-safety-information/admiralty-notice-to-mariners>.

### What are Notices to Mariners?

A Notice to Mariners (NM) is an update or alteration to a chart. Every year the UKHO issues over 5,000 NMs allowing mariners to update their charts to the latest safety-critical information.

We issue Small Craft NMs every week via the ADMIRALTY website.



Above is an example of a typical Notice. The title in bold denotes the NM number, the country, general area, and the nature of the correction. The second line contains the information's source.

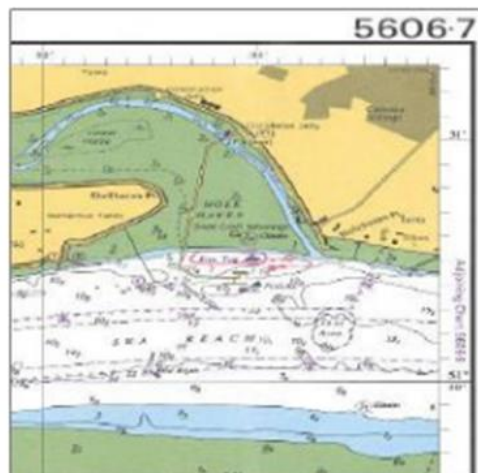
Beneath the title and source are the corrections, with clear instructions on the update. In this case, deletion of a buoy.

## Colour blocks

Notices may also be issued as colour blocks where a lot of changes are to be applied. These are simply cut out and glued on the chart at the coordinates specified. It is important to remember to cut off the enclosing black line around the outer limits of the area of the block. A permanent glue stick is ideal for attaching the block since it allows some movement and readjustment immediately after placement.

## Applying the Notice to Mariners

1. Determine if the Notice applies to your chart and your vessel.
  - › You may decide that it isn't relevant to your vessel. For example, changes to a very deep sounding or a new cable in very deep water are not necessarily relevant to the leisure mariner.
2. Apply the Correction
  - › When replacing a symbol, find the symbol you need to replace on the chart. Then draw the new symbol as close as possible to the original symbol and not over any other information (check Chart 5011). Link the new symbol to the required position with a curved line. Finally, draw two diagonal lines through the old symbol to show that it no longer applies.
  - › NB. Always insert new information before you delete any information.
  - › Insert the new symbol in the exact position given in the NM. If there isn't room, follow the process above for a 'replacement symbol' (see below).



- › You can find detailed instructions and examples of how to apply corrections to charts in the UKHO's publication NP294 – How to Correct your Charts the ADMIRALTY Way.



### 3. Document the Corrections Applied

› Check your work, and then, in the bottom left-hand corner of the chart, note the NM's number and year; only do this after applying the correction. If you decide that a correction does not apply to your vessel, making a note of the correction number on the chart will save re-checking later.

### 4. Use [admiralty.co.uk](http://admiralty.co.uk) to update your Small Craft Chart NMs.

## Troubleshooting

› When printing using Adobe Reader up to version 4.0, ensure that the 'Fit to Page' icon in the Adobe Acrobat print menu is switched off.

› With Adobe version 5.0, from the print menu, deselect 'Shrink Oversized Pages' to 'Page Size' and 'Expand Small Pages' to 'Paper Size', then click OK.

› With Adobe versions 6.0 and 7.0, in the Page Scaling Menu, within the print menu, choose 'None', then click OK.

› Certain Ink Jet printers require setting to 'Dithered Screening', not 'Pattern Screening'.

› You should compare printed colour copies with the colour image on the screen to ensure that the printer has reproduced all the colours correctly. You may need to adjust the printer property, resolution, and ink density to obtain the best results.

## Updating ADMIRALTY Small Craft Charts

Small Craft Chart series is a collection of A2 size chartlets, giving detailed coverage of popular areas.

1. Go ADMIRALTY Notice to Mariners page <http://www.ukho.gov.uk/nmwebsearch/NMsByChartNumber.aspx> or scan the QR code on the bottom left of each Small Craft Chart.
2. Search for the chart to be updated. Check that the title listed matches the chart to be updated. Click view selection.
3. It is good practice to update the list of corrections on your chart as you apply them.
4. For successful printing of Colour Blocks, the minimum printer specification is a good quality Ink Jet/Laser printer with 300 dpi resolution or more.
5. To print, click on the usual print icon in Adobe Acrobat.

## Troubleshooting

› When printing using Adobe Reader up to version 4.0, ensure that the 'Fit to Page' icon in the Adobe Acrobat print menu is switched off.

› With Adobe version 5.0, from the print menu, deselect 'Shrink Oversized Pages' to 'Page Size' and 'Expand Small Pages' to 'Paper Size', then click OK.

› With Adobe versions 6.0 and 7.0, in the Page Scaling Menu, within the print menu, choose 'None', then click OK.

› Certain Ink Jet printers require setting to 'Dithered Screening', not 'Pattern Screening'.



- › You should compare printed colour copies with the colour image on the screen to ensure that the printer has reproduced all the colours correctly. You may need to adjust the printer property, resolution, and ink density to obtain the best results.
- › You may have to trim the block to fit the folio sheet.

## Notice

We strongly recommend that Small Craft Chart users use the latest Small Craft Chart available.

Please note that NMs only apply to current editions and not to past editions.

